

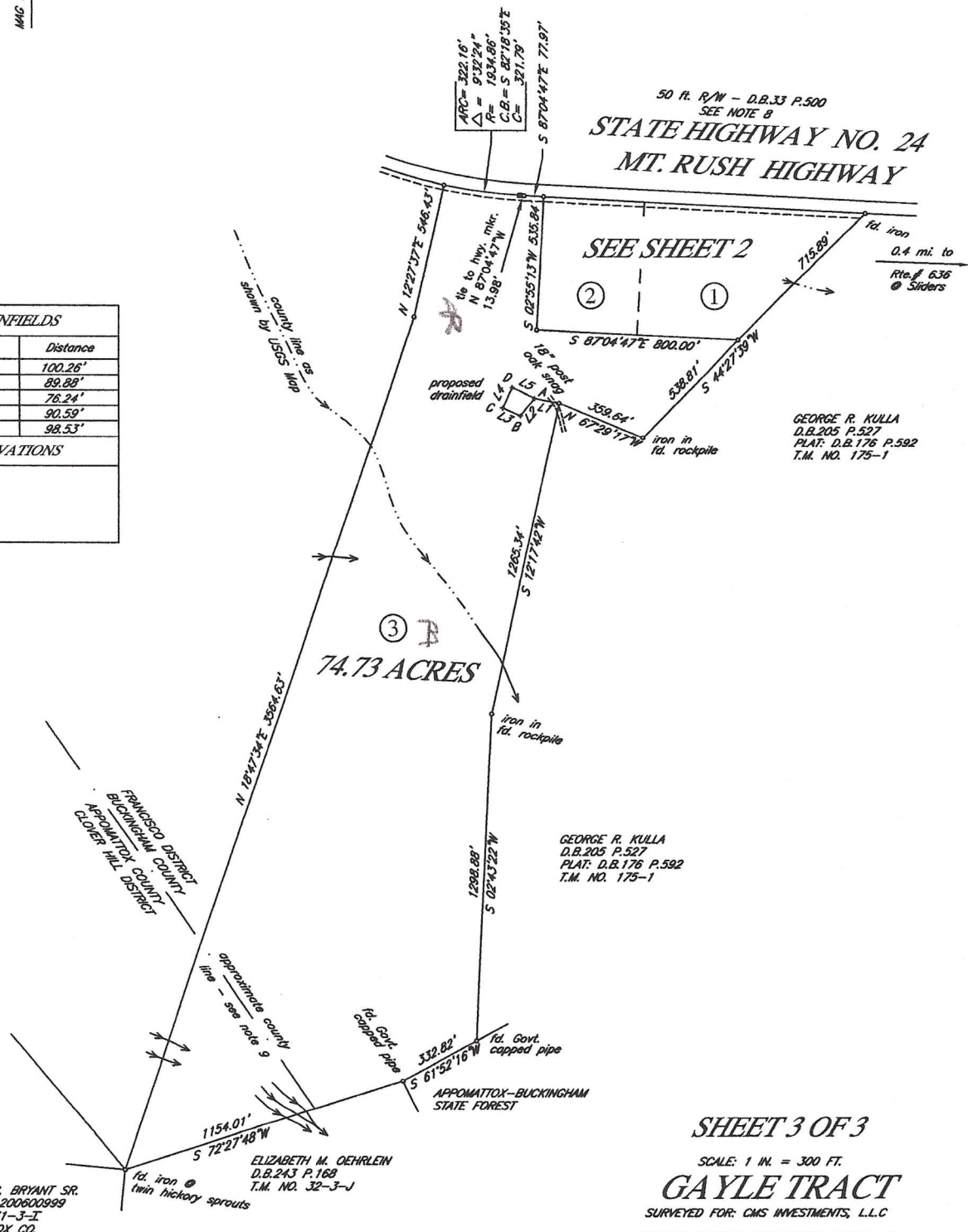
NOTE: SEE SHEET 1 FOR NOTES.

WILLIAM W. DICKERSON, JR.

LAND SURVEYOR
500 Court Street P.O. Box 112
Appomattox, Virginia 24522



PROPOSED DRAINFIELDS		
Course	Bearing	Distance
L1	N 78°46'02" W	100.26'
L2	S 39°17'06" W	89.88'
L3	N 66°46'31" W	76.24'
L4	N 24°54'33" E	90.59'
L5	S 64°20'38" E	98.53'
ASSUMED ELEVATIONS		
A=37.9'		
B=37.5'		
C=43.6'		
D=43.6'		



CLAYTON C. BRYANT SR.
INST. NO. 200600999
T.M. NO. 31-3-E
APPOMATTOX CO.

CLAYTON C. BRYANT SR.
INST. NO. 200600999
T.M. NO. 31-3-I
APPOMATTOX CO.

ELIZABETH M. OEHRLIN
D.B. 243 P. 168
T.M. NO. 32-3-J

GEORGE R. KULLA
D.B. 205 P. 527
PLAT. D.B. 176 P. 592
T.M. NO. 175-1

SHEET 3 OF 3

SCALE: 1 IN. = 300 FT.

GAYLE TRACT

SURVEYED FOR: CMS INVESTMENTS, L.L.C.
SOURCE OF TITLE: CMS INVESTMENTS, L.L.C.
D.B. 344 P. 936

FRANCISCO DISTRICT BUCKINGHAM COUNTY
CLOVER HILL DISTRICT APPOMATTOX COUNTY
VIRGINIA

MAY 2, 2007
DIVIDED NOVEMBER 15, 2007
REVISED MARCH 31, 2008

