

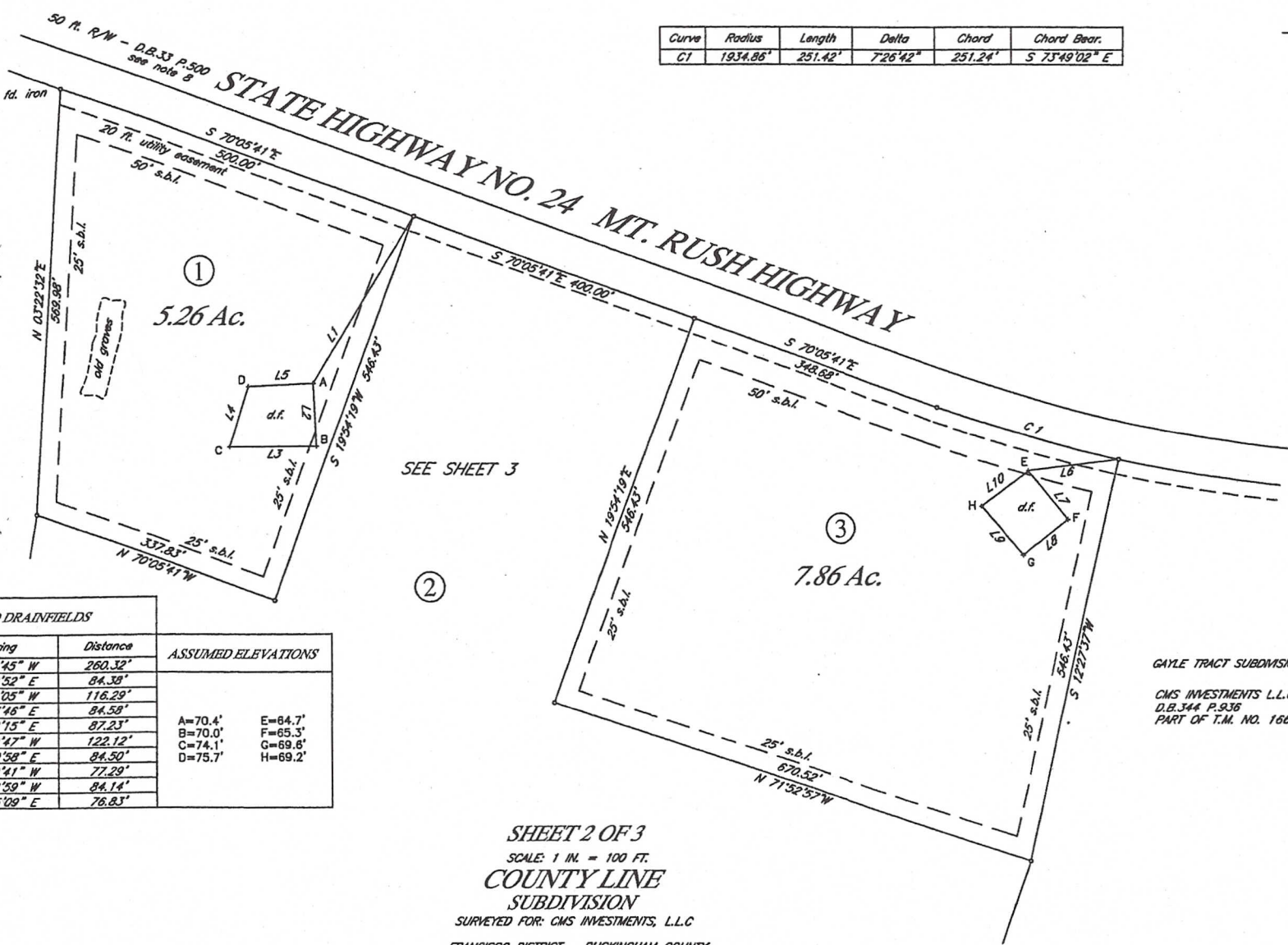
WILLIAM W. DICKERSON, JR.

LAND SURVEYOR
500 Court Street P.O. Box 112
Appomattox, Virginia 24522

NOTE: SEE SHEET 1 FOR NOTES.



Curve	Radius	Length	Delta	Chord	Chord Bear.
C1	1934.86'	251.42'	7°26'42"	251.24'	S 75°49'02" E



RALPH T. EDWARDS
D.B. 329 P. 441
PLAT: D.B. 154 P. 25
T.M. NO. 166-5

①
5.26 Ac.

SEE SHEET 3

②

③
7.86 Ac.

GAYLE TRACT SUBDIVISION

CMS INVESTMENTS L.L.C.
D.B. 344 P. 936
PART OF T.M. NO. 166-4

PROPOSED DRAINFIELDS			ASSUMED ELEVATIONS
Course	Bearing	Distance	
L1	S 30°55'45" W	260.32'	A=70.4' E=64.7' B=70.0' F=65.3' C=74.1' G=69.6' D=75.7' H=69.2'
L2	S 02°52'52" E	84.38'	
L3	S 89°36'05" W	116.29'	
L4	N 17°07'46" E	84.59'	
L5	N 87°12'15" E	87.23'	
L6	S 82°39'47" W	122.12'	
L7	S 40°00'59" E	84.50'	
L8	S 52°20'41" W	77.29'	
L9	N 39°42'59" W	84.14'	
L10	N 52°05'09" E	76.83'	

SHEET 2 OF 3
SCALE: 1 IN. = 100 FT.
COUNTY LINE
SUBDIVISION

SURVEYED FOR: CMS INVESTMENTS, L.L.C.

FRANCISCO DISTRICT BUCKINGHAM COUNTY
CLOVER HILL DISTRICT APPOMATTOX COUNTY
VIRGINIA

MAY 2, 2007
DIVIDED NOVEMBER 14, 2007
REVISED JUNE 23, 2008

